

HELI

8000-10000lbs [4-5t]

H3 IC Pneumatic Tire Forklift

CP[Q]YD40-50



H3 SERIES CP[Q]YD40-50

Technical features *remarkably improved*



↓ *Damping*

- > With suspension damping structure on overhead guard and optimized design for the transmission, the whole truck's vibration reduced a lot and relieve driver's fatigue greatly

↓ *Noise reduction*

- > Equipped with optimized designed parts around the engine, noise nearby ear and the truck sound level are reduced greatly

↓ *Heat dissipation*

- > With the optimized cooling system and great cooling performance, highly improved the reliability and durability of the transmission and engine, etc., many key parts.





Efficiency

- > With more power and low emission engine, stronger loading capacity, higher gradeability; With load sensing hydraulic system, quicker lifting speed, higher working efficiency

Reliability

- > Strengthen and Optimize designed core structure parts, strength improved greatly; with intelligent gear shifting technology to avoid 2nd-gear start, improved transmission life

Comfort

- > Intelligent gear shifting system, ease of operation
Standard half surrounded seat, safety and comfort

Maintainability

- > Wider internal space, more reasonable parts layout and 80° hood opening angle make maintenance easy
-



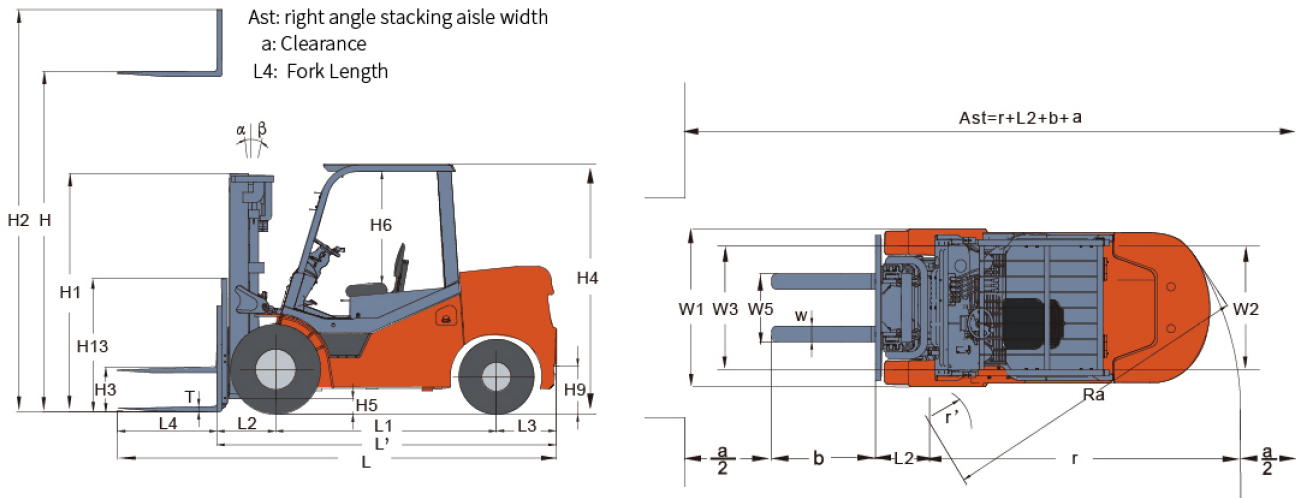
H3 SERIES CP[Q]YD40-50

Manufacturer and technical parameters

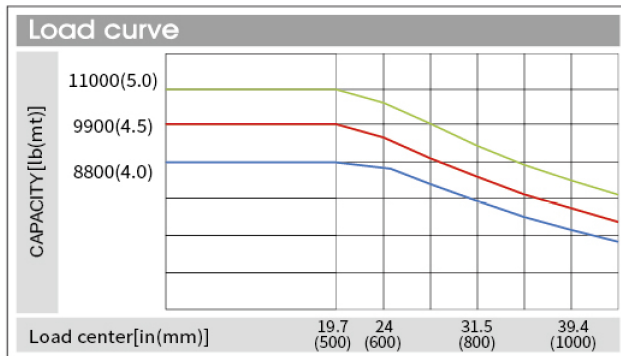
Character										
1.01	manufacturer				HELI					
1.02	model				CP(Q)YD40		CP(Q)YD45		CP(Q)YD50	
1.03	rated capacity		lb	kg	8000	3650	9000	4100	10000	4550
1.04	load center		in	mm	24	600	24	600	24	600
1.05	operation mode		type	type	Seat-type					
Dimensions										
2.01	Max.lifting height	H	in	mm	118	3000	118	3000	118	3000
2.02	Mast overall height(fork to the ground and mast be vertical)	H1	in	mm	89.6	2275	89.6	2275	89.6	2275
2.03	Max.fork lifting height(with backrest)	H2	in	mm	167.3	4250	167.3	4250	167.3	4250
2.04	Free lift height	H3	in	mm	5.9	150	5.9	150	5.9	150
2.05	Overall height(overhead guard)	H4	in	mm	92.5	2350	92.5	2350	92.5	2350
2.06	Min.ground clearance(at the mast)	H5	in	mm	6.9	175	6.9	175	6.9	175
2.07	Distance from the surface of the seat to the overhead guard	H6	in	mm	40.2	1020	40.2	1020	40.2	1020
2.08	Traction pin height	H9	in	mm	15	380	15	380	15	380
2.09	Backrest height(calculated from the surface of the fork)	H13	in	mm	49.2	1250	49.2	1250	49.2	1250
2.10	Overall length(with fork/without fork)	(L/L)	in	mm	169.7/127.6	4310/3240	169.7/127.6	4310/3240	175.6/127.6	4460/3240
2.11	Wheel base	L1	in	mm	82.7	2100	82.7	2100	82.7	2100
2.12	Front overhang	L2	in	mm	22	560	22	560	22	560
2.13	Rear overhang	L3	in	mm	22.8	580	22.8	580	22.8	580
2.14	Overall width	W1	in	mm	59.4	1510	59.4	1510	59.4	1510
2.15	Tread (front/rear)	(W3/W2)	in	mm	48.4/46.9	1230/1190	48.4/46.9	1230/1190	48.4/46.9	1230/1190
2.16	Fork adjustable range(the external of the fork)(Max./Min.)	W5	in	mm	52.4/11.8	1330/300	52.4/11.8	1330/300	52.4/11.8	1330/300
2.17	Min.turning radius(exterior)	r	in	mm	110.6	2810	110.6	2810	110.6	2810
2.18	Min.turning radius(interior)	r'	in	mm	8.5	215	8.5	215	8.5	215
2.19	Min.right angle aisle width	Ra	in	mm	124	3150	124	3150	124	3150
2.20	Min.right angle stacking aisle width	Ast	in	mm	187.4	4760	187.4	4760	187.4	4760
2.21	Mast tilting angle (front/rear)	α/β	deg	deg	6°/12°					
2.22	Fork size	L4×W×T	in	mm	42.1×5.9×1.97	1070×150×50	42.1×5.9×1.97	1070×150×50	48×5.9×1.97	1220×150×50
Weight										
3.01	Total weight		lb	kg	14420	6540	14860	6740	15430	7000
Wheel and tyre										
4.01	Wheel number× drive wheel (front/rear)				2X/2					
4.02	Tyre type(front/rear)				Pneumatic tyre					
4.03	Tyre size(front/rear)				8.25-15-14PR/7.00-12-12PR				300-15-18PR/7.00-12-12PR	
4.04	Service brake				Hydraulic-Foot Pedal					
4.05	Parking brake				Mechanical-Hand Lever					

Performance							
Model	CPQYD40-KUH				CPQYD45-KUH		
Max.drawbar pull (Loaded/Unloaded)	lbf	kN	7870/5620	35/25	7870/5620	35/25	
Max.Gradeability (Loaded/Unloaded)	%	%	21/30		21/29		
Max.traveling speed (Loaded/Unloaded)	mph	km/h	16.2/16.8	26/27	16.2/16.8	26/27	
Lifting Speed (Loaded/Unloaded)	ft/min	mm/s	118.2/114.3	600/580	118.2/114.3	600/580	
Lowing Speed (Loaded/Unloaded)	ft/min	mm/s	86.7/82.7	440/420	86.7/82.7	440/420	
Drive and transmission control device							
Engine mode							
Engine rated power	HP/rpm	kW/rpm	GAS:73.2/2400 LPG:73.2/2400	GAS:54.6/2400 LPG:54.6/2400	GAS:73.2/2400 LPG:73.2/2400	GAS:54.6/2400 LPG:54.6/2400	
Engine rated torque	(lbf.ft)/rpm	Nm/rpm	GAS:182/1400 LPG:200.1/1400	GAS:246.8/1400 LPG:271.4/1400	GAS:182/1400 LPG:200.1/1400	GAS:246.8/1400 LPG:271.4/1400	
Engine cylinder number-borexstroke							
Engine displacement	L	L					
Engine type					GAS/LPG		
Emission					EPA/CARB,EUstage V		
Battery(Voltage/Capacity)	V/Ah	V/Ah					
Engine fuel tank capacity	L	L					
Transmission box shifting gears (Front/Rear type)	type						

Note:*stands for theoretical calculating value.



Performance								
Model	CPQYD50-KUH		CPYD40-KUH		CPYD45-KUH		CPYD50-KUH	
Max.drawbar pull	8095/5620	36/25	8320/5170	37/23	8320/5170	37/23	8545/5170	38/23
*Max.Gradeability	21/27		21/30		21/29		21/27	
Max.traveling speed	16.2/16.8	26/27	16.2/16.8	26/27	16.2/16.8	26/27	16.2/16.8	26/27
Lifting Speed	118.2/114.3	600/580	118.2/114.3	600/580	118.2/114.3	600/580	118.2/114.3	600/580
Lowing Speed	86.7/82.7	440/420	86.7/82.7	440/420	86.7/82.7	440/420	86.7/82.7	440/420
Drive and transmission control device								
Engine mode	KUBOTA WG3800							
Engine rated power	GAS:73.2/2400 LPG:73.2/2400	GAS:54.6/2400 LPG:54.6/2400	LPG:84.8/2400	LPG:63.2/2400	LPG:84.8/2400	LPG:63.2/2400	LPG:84.8/2400	+LPG:63.2/2400
Engine rated torque	GAS:182/1400 LPG:200.1/1400	GAS:246.8/1400 LPG:271.4/1400	LPG:208.3/1200	LPG:282.4/1200	LPG:208.3/1200	LPG:282.4/1200	LPG:208.3/1200	LPG:282.4/1200
Engine cylinder number-borexstroke	4-100×120							
Engine displacement	3.77							
Engine type	LPG							
Emission	EPA/CARB,EUstage V							
Battery(Voltage/Capacity)	12/80							
Engine fuel tank capacity	90							
Transmission box shifting gears (Front/Rear type)	2-1Power Shift T/M							



CP(Q)YD40

CP(Q)YD45

CP(Q)YD50

Note: The vertical axis stands for load capacity and the horizontal axis stands for load center which is calculated from the front of the fork. The base point of the standard load refers to the center position of the cube with 1000mm length of side. When mast is tilted forward, nonstandard fork usage or load with over wide goods, load capacity will be reduced. Different load capacity in different load center can be known in time through load chart.



WIDE VIEW MAST

Mast model	Max. lifting height		Load capacity (load center 500mm)						Overall Height (fork to the ground)		Freelift (With Backrest)		Mast Tilting angle	Service Weight(unload)					
			CP(Q)YD40		CP(Q)YD45		CP(Q)YD50							CP(Q)YD40		CP(Q)YD45		CP(Q)YD50	
	in	mm	lb	Kg	lb	Kg	lb	Kg	in	mm	in	mm	(°)α/β	lb	Kg	lb	Kg	lb	Kg
M260	102.4	2600	8000	3650	9000	4100	10000	4550	81.7	2075	5.9	150	6°/12°	14350	6510	14790	6710	15365	6970
M270	106.3	2700	8000	3650	9000	4100	10000	4550	83.7	2125	5.9	150	6°/12°	14375	6520	14815	6720	15390	6980
M300	118	3000	8000	3650	9000	4100	10000	4550	89.6	2275	5.9	150	6°/12°	14420	6540	14860	6740	15430	7000
M330	130	3300	8000	3650	9000	4100	10000	4550	95.5	2425	5.9	150	6°/12°	14460	6560	14905	6760	15475	7020
M350	137.8	3500	8000	3650	9000	4100	10000	4550	99.4	2525	5.9	150	6°/12°	14505	6580	14950	6780	15520	7040
M370	145.7	3700	8000	3650	9000	4100	10000	4550	103.3	2625	5.9	150	6°/12°	14530	6590	14970	6790	15540	7050
M375	147.6	3750	8000	3650	9000	4100	10000	4550	104.3	2650	5.9	150	6°/12°	14550	6600	14990	6800	15565	7060
M400	157.5	4000	8000	3650	9000	4100	10000	4550	111.2	2825	5.9	150	6°/6°	14570	6610	15015	6810	15585	7070
M425	167.3	4250	*8000	*3650	*9000	*4100	*10000	*4550	116.1	2950	5.9	150	6°/6°	14705	6670	15145	6870	15720	7130
M450	177.2	4500	*8000	*3650	*9000	*4100	*10000	*4550	121	3075	5.9	150	6°/6°	14725	6680	15170	6880	15740	7140
M475	187	4750	*7150	*3500	*8150	*3700	*8900	*4000	126	3200	5.9	150	6°/6°	14770	6700	15210	6900	15785	7160
M500	196.9	5000	*6800	*3100	*7500	*3420	*8400	*4000	130.9	3325	5.9	150	6°/6°	14815	6720	15255	6920	15830	7180
M550	216.5	5500	*6250	*2850	*6700	*3060	*7500	*3420	140.7	3575	5.9	150	3°/6°	14835	6730	15280	6930	15850	7190
M600	236.2	6000	*6800	*3100	*7500	*3420	*7950	*3620	150.6	3825	5.9	150	3°/6°	14880	6750	15320	6950	15895	7210

Note: (1) *stands for the rated capacity when the front tyre is double-tyre. (2) When the front tyre of the 2-3.5t truck is double tyre, the service weight of the truck is the weight in the table plus 110kg.

WIDE VIEW FULL FREE 2-STAGE MAST

Mast model	Max. lifting height		Load capacity (load center 500mm)						Overall Height (fork to the ground)		Freelift (With Backrest)		Mast Tilting angle	Service Weight(unload)					
			CP(Q)YD40		CP(Q)YD45		CP(Q)YD50							CP(Q)YD40		CP(Q)YD45		CP(Q)YD50	
	in	mm	lb	Kg	lb	Kg	lb	Kg	in	mm	in	mm	(°)α/β	lb	Kg	lb	Kg	lb	Kg
ZM261	102.8	2610	8000	3650	9000	4100	10000	4550	83.1	2110	20.9	530	6°/12°	14580	6615	15025	6815	15600	7075
ZM271	106.7	2710	8000	3650	9000	4100	10000	4550	85	2160	22.8	580	6°/12°	14640	6640	15080	6840	15650	7100
ZM300	118	3000	8000	3650	9000	4100	10000	4550	90.7	2305	28.5	725	6°/12°	14750	6690	15190	6890	15760	7150
ZM330	130	3300	8000	3650	9000	4100	10000	4550	96.7	2455	34.4	875	6°/12°	14781	6705	15220	6905	15780	7165
ZM350	137.8	3500	8000	3650	9000	4100	10000	4550	100.6	2555	38.4	975	6°/12°	14805	6715	15245	6915	15820	7175
ZM375	147.6	3750	8000	3650	9000	4100	10000	4550	105.5	2680	43.3	1100	6°/12°	14835	6730	15280	6930	15850	7190
ZM400	157.5	4000	8000	3650	9000	4100	10000	4550	110.4	2805	48.2	1225	6°/6°	14870	6745	15310	6945	15885	7205
ZM450	177.2	4500	*7600	*3450	*8350	*3800	*9000	*4100	120.3	3055	58.1	1475	6°/6°	14925	6770	15370	6970	15940	7230
ZM500	196.9	5000	*8000	*3650	*9000	*4100	*10000	*4550	130.1	3305	67.9	1725	6°/6°	15000	6805	15445	7005	16015	7265
ZM550	216.5	5500	*7250	*3300	*8400	*3820	*8800	*4000	140	3555	77.8	1975	3°/6°	15060	6830	15500	7030	16070	7290
ZM600	236.2	6000	*6250	*2850	*6700	*3060	*7500	*3420	149.8	3805	87.6	2225	3°/6°	15110	6855	15550	7055	16126	7315

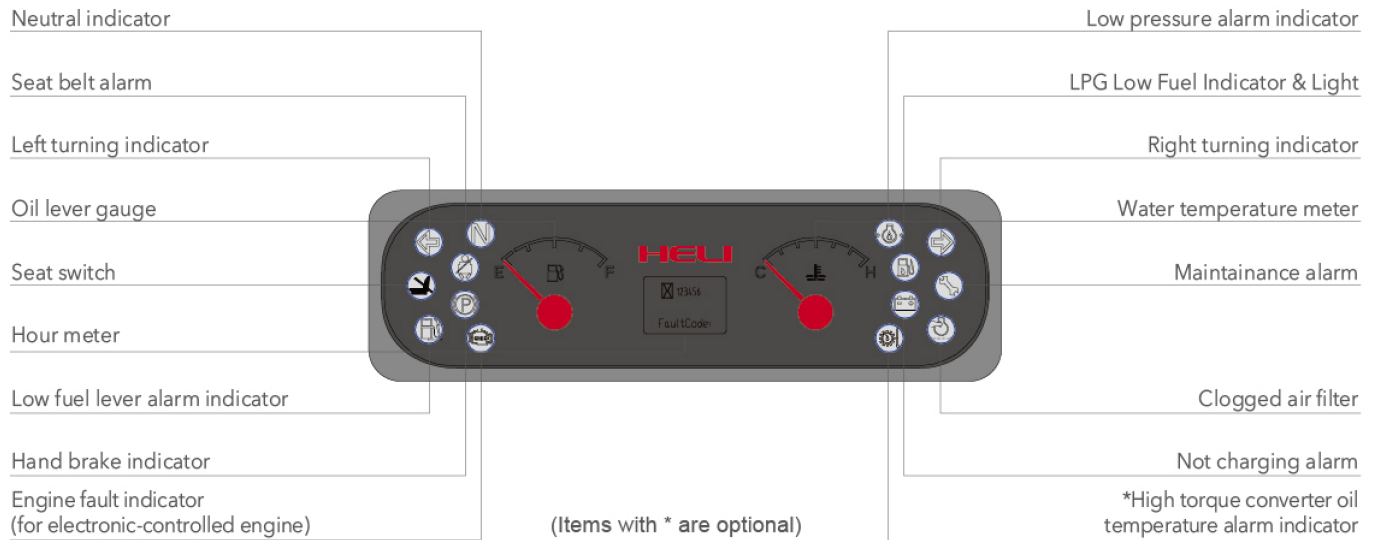
Note: (1)*stands for the rated capacity when the front tyre is double-tyre
 (2)When the front tyre of the 8000-10000lbs truck is double tyre,the service weight of the truck is the weight in the table plus 300lbs
 (3)The free lifting height (without backrest)of the 8000-10000lbs truck is the height (without backrest) in the table plus 12.8in

WIDE VIEW FULL FREE 3-STAGE MAST

Mast model	Max. lifting height		Load capacity (load center 500mm)						Overall Height (fork to the ground)		Freelift (With Backrest)		Mast Tilting angle	Service Weight(unload)					
			CP(Q)YD40		CP(Q)YD45		CP(Q)YD50							CP(Q)YD40		CP(Q)YD45		CP(Q)YD50	
	in	mm	lb	Kg	lb	Kg	lb	Kg	in	mm	in	mm	(°)α/β	lb	Kg	lb	Kg	lb	Kg
ZSM392	154.3	3920	*7700	*3500	*8700	*3950	*9550	*4350	88.6	2250	25.6	650	6°/6°	15160	6880	15600	7080	16180	7340
ZSM435	171.3	4350	*7050	*3200	*8250	*3750	*9000	*4100	94.3	2395	31.3	795	6°/6°	15200	6900	15650	7100	16230	7360
ZSM450	177.2	4500	*6700	*3050	*8000	*3650	*8600	*3900	96.3	2445	33.3	845	6°/6°	15250	6920	15700	7120	16270	7380
ZSM470	185	4700	*6500	*2950	*7600	*3450	*8250	*3750	99	2515	37.6	955	6°/6°	15300	6940	15740	7140	16310	7400
ZSM480	189	4800	*6800	*3100	*8000	*3650	*8800	*4000	100.2	2545	39	990	6°/6°	15320	6950	15760	7150	16340	7410
ZSM500	196.9	5000	*6400	*2900	*7800	*3500	*8600	*3900	104.1	2645	41	1040	6°/6°	15360	6970	15800	7170	16380	7430
ZSM540	212.6	5400	*6050	*2750	*7450	*3250	*8350	*3850	108.7	2760	45.9	1165	6°/6°	15450	7010	15900	7210	16470	7470
ZSM600	236.2	6000	*5250	*2400	*6250	*2850	*7150	*3250	118.5	3010	55.3	1405	3°/6°	15630	7090	16070	7290	16650	7550

Note: (1)*stands for the rated capacity when the front tyre is double-tyre
 (2)When the front tyre of the 8000-10000lbs truck is double tyre,the service weight of the truck is the weight in the table plus 300lbs
 (3)The free lifting height (without backrest)of the 8000-10000lbs truck is the height (without backrest) in the table plus 12.8in

Reliable special designed instrument



Standard configuration

- Hom
- Control valve
- Wholly hydraulic-powered steering
- Half surrounded seat
- Backrest
- Rear view mirror
- Front combined lamp
- Transmission oil filter
- Engien flame out device
- Rachet type parking brake
- Driver's tools
- Power brake
- Rear combined lamp
- Reversing buzzer
- Tilt-lock valve
- Tilt adjustable steering column
- Overhear guard rain cover
- OPS(travlling control system)

- Standard fork
- Integration electric box
- Hydraulic circuit oil filter
- Speed-limiting valve
- Wide wiew mast
- Air intaking device
- Durable tire with decorative pattern
- Lifting and tilting operation handles
- Traction pin
- Head lamp
- Hydraulic oil dipstick
- Overhead guard
- Torque converter oil dipstick
- Combined instrument
- Electric-hydraulic direction changing

Optional

- Driver's cab
- Warning light
- High air exhausting device
- Double air cleaner
- Suspension seat
- Fork extension
- Heater
- Solid tyre
- Widen fork carriage
- Wind shield
- Rear working light
- Air condition(certain type)
- Torque converter oil temperature meter
- Tilting cylinder protection cover
- User-specified color
- Optional attachments

- Double-tyre and protected device
- Rotating seat for LPG
- Over speed alarm
- Counter weight protective screening
- Rear View Camera/Overhead guard top rain glass
- SAE stardard
- Engine hood locking
- Thin-point type fork
- Soundproof and noise reducing device
- Universal key
- Radiator protected screening
- Tractor pin with mild steel safeguard
- Overspeed alarm device
- High temperature resistant device
- Fuel tank with lock
- Weighting device
- Cab with skylight



检测 CNAS L7096

HELI CANADA

5705, place Kubota
 Drummondville (Qc)
 Canada, J2B 6V4
 1-833-HELICAN
 info@heliforklift.ca
 heliforklift.ca



Our products are subject to improvements and changes without notice.